

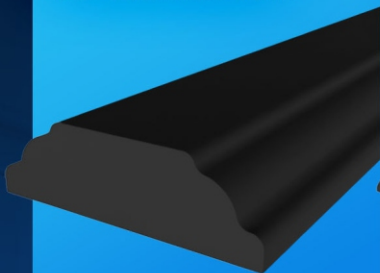
SDL PROFILES

NOW ALSO AVAILABLE IN **BLACK**


VS2T

 **BLACK MATERIAL**

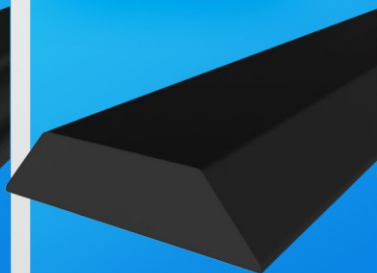
1.125" WIDTH X .295" HEIGHT



VS3

 **BLACK MATERIAL**

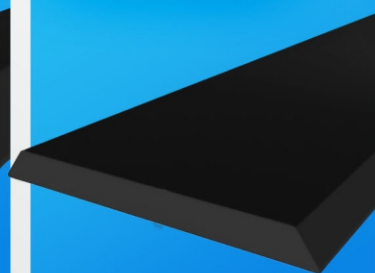
1.125" WIDTH X .295" HEIGHT



VS4

 **BLACK MATERIAL**

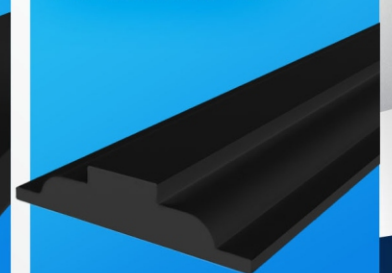
3.475" WIDTH X .295" HEIGHT



VG21C

 **BLACK PAINTED**

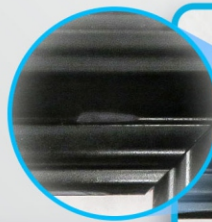
.875" WIDTH X .188" HEIGHT



NEED A DIFFERENT PROFILE IN BLACK?

Call our customer support team to speak about your specific profile need in black!

- Pioneered the industry standard with an innovative process and a NEW high quality Black Bar Offering
- Limitless potential for BLACK profile offerings in any shape your looking for!
- Our BLACK profiles have gone through rigorous testing to create high heat qualifiers paired with high quality standards



NEW BLACK CORE MATERIAL

OLD WHITE CORE MATERIAL

- Paint Chipped? No worries! Its a new BLACK Core!
- Fade Rate is Formulated for Interior and Exterior Use
- Designed for High Heat Applications

VISIT US AT WWW.CREATIVEMILLWORK.COM  888-759-7121